

Merrow MG-Class

Advanced Design. Premium Build Quality.

Direct Drive
Available



MG-3DGE-7

Because The Stitch Matters™

Nothing sews like a Merrow. Fitted with our proprietary barrel cams, the MG-Class features a precise needle throw and small tolerances, so stitches are tight, uniform, and beautiful. From production of heavy outerwear to detailed seaming of netting and mesh, the MG-class delivers the world's most versatile overlock stitch.



MG-Class Cams

Standard Overlock



W SERIES

Technical Specifications

Seam Type	504
Seam Width	1/16" - 3/16"
Operating Speed	5500 rpm
Stitch Eccentric	4-40 spi
Threads	3

Production Setup Options (priced individually) :

- Non-submerged or submerged table
- Auto presser foot lifter
- Pneumatic waste system
- Needle positioner
- Metering device
- Chain cutter
- Puller

MG-3DW-2

Light- to Medium-weight Overlock

Similar to the MG-3DW, arranged with extra wide cutters and coarse feeds for thicker fabrics

Application

Seaming or edging **LIGHT to MEDIUM** woven and knit fabrics



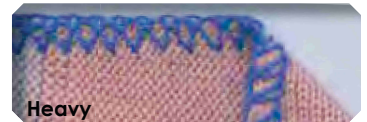
MG-3DW-7

Medium- to Heavy-weight Overlock

Seams/edges heavy material with increased looper extension

Application

Seaming or edging **MEDIUM to HEAVY** woven and knit fabrics



Rolled Overedge



R SERIES

Technical Specifications

Seam Type	503, 505
Seam Width	3/32" - 5/32"
Operating Speed	5500 rpm
Stitch Eccentric	4-40 spi
Threads	2-3

Production Setup Options (priced individually) :

- Non-submerged or submerged table
- Auto presser foot lifter
- Pneumatic waste system
- Needle positioner
- Metering device
- Chain cutter
- Puller

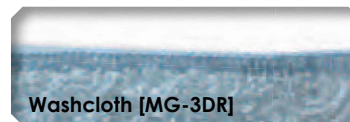
MG-3DR

Rolled Overedge [5/32"]

Three-thread, single row differential feed machine producing a rolled edge on bath and table linens

Applications

Towels, dishcloths, napkins, washcloths, blankets



MG-3DRWL

Rolled Down Edge [3/32"]

Three-thread rolled-down edging machine with special presser foot finger and parts for sewing lightweight fabrics

Applications

Women's sleepwear, lingerie, blouses, sheer curtains

MG-2DR

Folded Down Edge [3/32"]

Two-thread machine with special needle plate and presser foot finger for folding edges down on light material

Application

Folded edge on lightweight curtain material

Emblem Edging



U SERIES

Technical Specifications

Seam Type	505
Seam Width	1/16" - 5/16"
Operating Speed	5500 rpm
Stitch Eccentric	4-40 spi
Threads	2-6

- Production Setup Options (priced individually):**
- Needle positioner
 - Chain cutter
 - Auto presser foot lifter
 - Pneumatic waste system

MG-3U T NEW thread tension release system

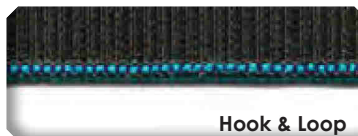


MG-3U (STANDARD)

Standard Emblem Edge [3/16"]

Three-thread, special foot and feed for exceptionally tight and uniform emblem overedge

Applications
Emblems, badges, patches, and insignia



MG-3UN

Narrow Emblem Edge [1/16"]

Similar to the MG-3U with a smaller stitch tongue for narrower stitch formation on smaller patches

MG-3UW

Wide Emblem Edge [5/16"]

Sews a wider 5/16" emblem edge on larger patches

MG-3UV

Hook & Loop Emblem Edge [3/16"]

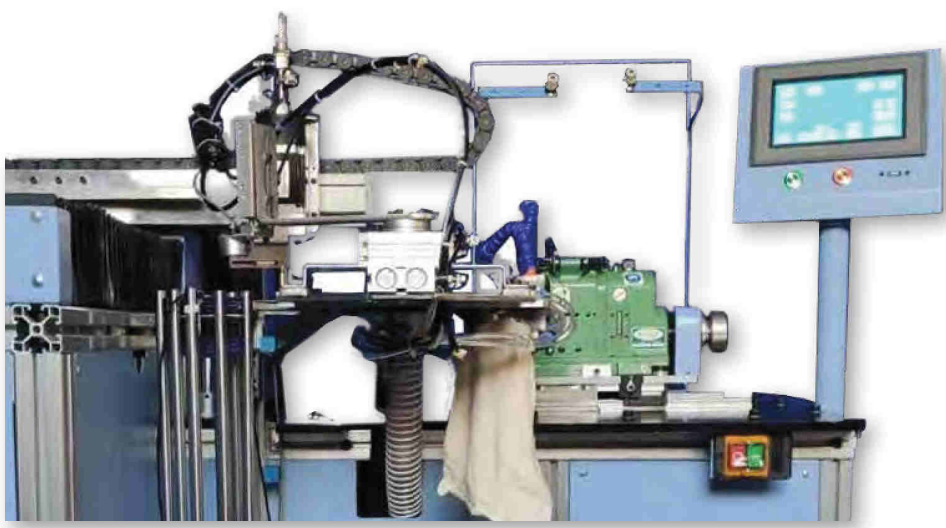
Three-thread machine with specially adapted feed system to prevent take-up of hook-and-loop-backed patches

MG-2U FLAT

Flat Emblem Edge [5/32"]

Two-thread machine, sews a flat finished edge on patches

Automatic Emblem Edging



Fully-Automatic Emblem Edging

The emblem edging machine turns patch production into a fully automated process. With its hands-free operation, this machine automatically feeds, trims, and counts emblems. Update your production today!

Applications
Emblems, badges, patches, and insignia



Technical Heavy Edging



E SERIES

Technical Specifications

Seam Type	505
Seam Width	3/16"-1/4"
Operating Speed	5500 rpm
Stitch Eccentric	4-40 spi
Threads	3

Production Setup Options (priced individually) :

- Non-submerged or submerged table
- Auto presser foot lifter
- Pneumatic waste system
- Needle positioner
- Metering device
- Chain cutter
- Puller

MG-3DE [3/16"]

Heavy Overedge Machine

Three-thread machine without cutters for overedge finish on elastic knit fabric. Can be arranged to fold elastic inserts within the stitch

Applications

Surgical hose, glove cuffs, medical support garments



MG-3DE-7 [1/4"]

Heavy Overedge Machine

Similar to the MG-3DE, but with a high lift setup for handling heavy material

Applications

Bandages, knee pads, elbow guards, medical support garments



MG-4D-G500 [3/16"]

Glove Cuff Edging

Two-needle, four-thread machine for cuffing heavy gloves. Fourth thread strengthens seam and reduces pucker.



MG CLASS

Netting



G SERIES

Technical Specifications

Seam Type	514
Seam Width	5/32"
Operating Speed	5500 rpm
Stitch Eccentric	4-40 spi
Threads	2

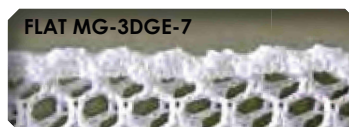
MG-3DGE-7

Seaming of Netting & Mesh

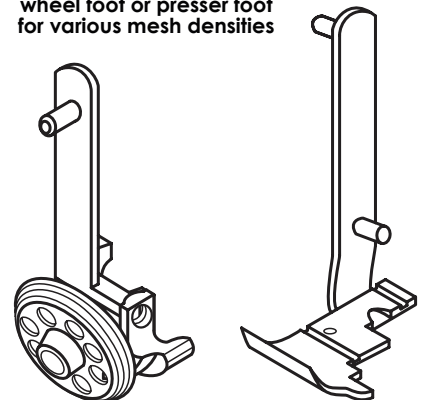
Single needle, three-thread, single row differential feed machine for side-seaming mesh bags. MG-3DRGE-7 available for rolled stitch.

Applications

Laundry bags, athletic equipment, netting, mesh



Can be fitted with either a wheel foot or presser foot for various mesh densities



MG-3DGE-7 WF
Wheel Foot

MG-3DGE-7 FF
Fixed Presser Foot

Production Setup Options (priced individually) :

- Non-submerged or submerged table
- Auto presser foot lifter
- Pneumatic waste system
- Needle positioner
- Metering device
- Chain cutter
- Puller