

V300.2

AUTOMATIC CONTINUOUS WAISTBAND UNIT



view more



VI.BE.MAC.

AUTOMATIC CONTINUOUS WAISTBAND UNIT

V300.2



FLEXIBLE



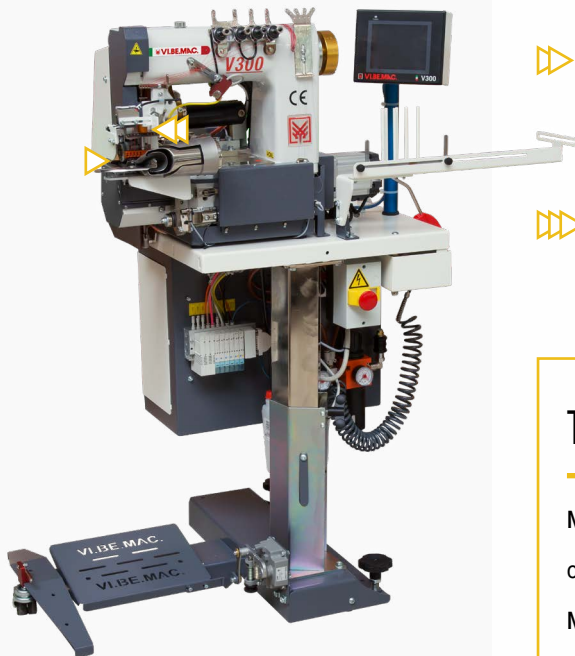
AUTOMATIC



PRODUCTIVE

Automatic continuous waistband attaching unit for jeans, casual trousers and denim jackets. Machine entirely manufactured in Italy with Vi.Be.Mac. sewing head.

Remarkable simplicity of design, improvement in speed, electronic control of fabric transport, extremely easy solutions and many other features, make the V300.2 a perfect and only unit which can meet every kind of fashion requirement coming from the trousers and jeans. The FLX model version is convertible from lockstitch to chain stitch and viceversa or mixed solutions able to satisfy any style request (patented system worldwide).



▷ NEEDLE FEEDING TECHNOLOGY

Able to perform on the most difficult stretch fabrics, always granting high result, even with banana shape

▷▷ AUTOMATIC CUT AND SKIP STITCH

The unique unit able to provide this great advantage, assuring a high precision and saving helper's manual operation

▷▷▷ MECHANICAL SKIP STITCH AND PNEUMATIC TENSIONS (WITH 3 POSITIONS)

For better quality with light and stretch fabric

TECHNICAL SPECIFICATIONS

Max Sewing Machine Speed: 4200 rpm

chain stitch / 3200 rpm lockstitch

Max Sewing Head Speed: 4500 rpm chain

stitch / 3500 rpm lockstitch

Stitching Length: from 0.9 to 5 mm

Sewing Head: Vi.Be.Mac.

Puller Motor: 200 W

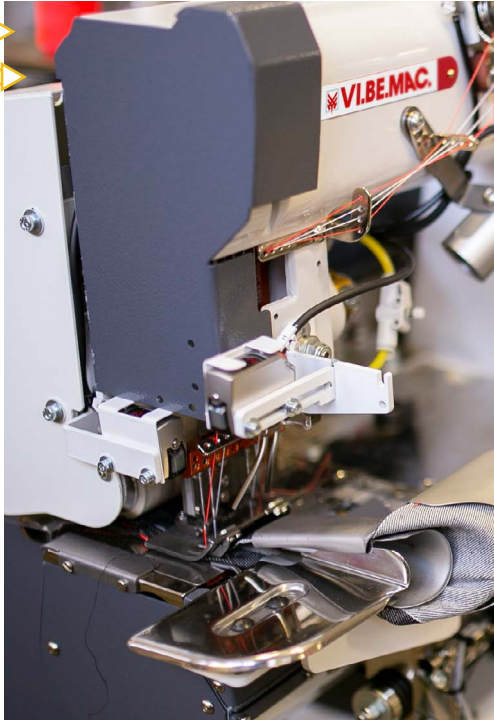
Sewing Machine Motor:

750 W (Direct Drive)

Power Requirement:

220 V Single-Phase 50/60 rpm

Air Consumption: 3.5 L/min



NEEDLE GAUGES

Standard needle gauges:

CS: 3/4" - 1" - 1"1/4 - 1"1/2 - 1"3/4 - 2" - 2"1/4

LS: 1" - 1"1/4 - 1"1/2 - 1"3/4 - 2"

FLX in double lockstitch configuration:

1" - 1"1/4 - 1"1/2 - 1"3/4 - 2"

Included needle gauges: 7/8" - 1"1/8 - 1"3/8 - 1"5/8 - 1"7/8 (no extra folder)

Optional needle gauges: 1"3/8 - 1"1/2 - 2" (all three gauges with 1/8" left side & 1/4" right side)

LEGENDA



1 needle lockstitch



2 needle chain stitch

FEATURES

✓ Electric puller for a fast and well supported feeding of the unit, with energy saving thanks to the direct servo motor

✓ Direct drive, which is able to achieve greater efficiency, reducing consumption

✓ Electronics with a more intuitive and completely renovated user interface, entirely developed by Vi.Be.Mac.

✓ Wide range of configurations available

✓ Plier for a perfect cut

✓ Panel control for easy setting

✓ Improved performances valves

✓ Panasonic direct drive motor

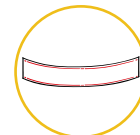
✓ New pneumatic tensions (PATENTED)

✓ New mechanical skip-stitch (PATENTED)

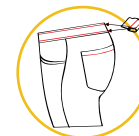
available for V300.2-1CS model

✓ Programmable/self-learning final long skip-stitch

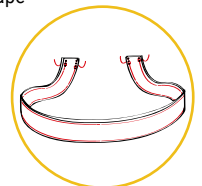
✓ New design of the stand



banana shape



waistband attach



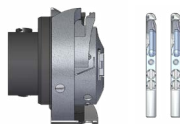
1FLX

1FLXE

1CS

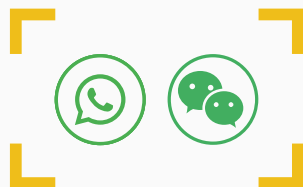


1LS

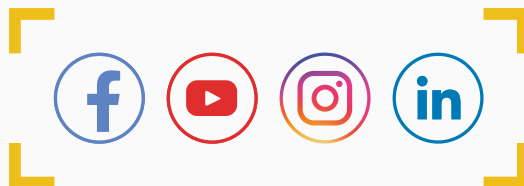


Models available: V300.2-1CS, V300.2-1LS, V300.2-1FLXE, V300.2-1FLX

GET IN TOUCH



FOLLOW OUR SOCIALS



VI.BE.MAC.



VI.BE.MAC. S.p.A.

Società soggetta a direzione e coordinamento di Jack Europe S.à.r.l.

Via Monte Pastello, 7/i - 37057 San Giovanni Lupatoto (VR), Italy

vibemac@vbm-grp.com - sales@vbm-grp.com - customercare@vbm-grp.com

Tel. [+39 045 8778151](tel:+390458778151) / [8778152](tel:+390458778152)



www.vibemac.com

